

*Price Menu*



*Senior  
Portraits*

*Class of*

2005



Dear Senior and Parents,

Thank you for selecting O'Connell Photography to create your senior portraits. The poses you will find on the following pages and CD have not had any enhancements done on them. This proof booklet and CD of your images is made for you to take home and to assist you in selecting the best poses and expressions. Sometimes the poses may be a little dark or light, or not of the proper color. This will all be corrected on your finished portraits and will be made to O'Connell's exacting quality standards. Don't worry if you see any blemishes, those will all be removed or softened too, on your ordered portraits!\*

\* *folio prints are retouched only if wallets or larger sizes are ordered from the pose.*

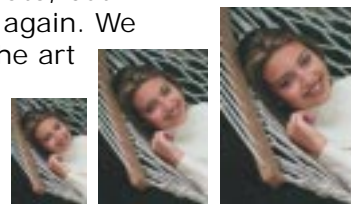
### Stuff you really need to read . . .

. . . so later you don't say "I was never told about that!" Then you'll get mad at us, and we would hate to have that happen.

**Viewing your Images . . .** We've gone to the new and exciting method of digital capture and we have included a CD that has the poses from your session on it. Just pop it into a Windows PC. It should start automatically. After the opening screen, click on the play button to watch your images accompanied with music. The pose number of each image is at the top. This CD has an expiration date, but should you wish to purchase it, we will make one that you can see over and over again. We also have a new service that lets you see any of your poses using our state-of-the-art projection system. This allows you to view each pose in almost any size from a

small 5x7", 8x10", 11x14" desk size print, to appropriate wall sizes of 16x20", 20x24" or larger. No longer

will you have to guess how a particular pose will look in a certain size. We can even place a frame around the portrait to let you see how wonderful the pose will look framed. Since this special service takes a little time, please allow about 15-30 minutes to go over your poses when you return to place your order. We also ask that a parent be at this ordering appointment since they will want to know what's available.



### A Word About Wall Portraits . . .

Having a wall portrait made of someone you love, and then proudly displaying it in your home accomplishes a couple of things: It's a great and affordable way to custom decorate your home. It shows everyone who enters your home just how you feel about your family, and in studies done of young children, psychologists found that having portraits displayed of them actually increases their self esteem.

**What's new . . . PLENTY !** When you go through this catalog you will see all kinds of new:

- ~ Multiple Pose Packages
- ~ Image Gallery's
- ~ Senior Mats
- ~ Signature Wallets
- ~ Multi-pose wallets
- ~ Cool Edge Wallets
- ~ Framing at low prices

**Finishes . . .** Portraits are finished in our popular **SENIOR** finish which is a protective lustre lacquer finish to help protect the prints from moisture and ultra violet rays. 5x7" and larger portraits are bonded to art board, perfect for framing with or without glass. Our **Canvas** finish is the finest we offer. Portraits 11x14 or larger are bonded to a special canvas board and mounted under high pressure to allow the threads of the canvas to become visible under the print surface.

### A few Reminders . . .

- ~ the session fee paid when you had your portraits taken is not applicable toward your portrait order.
- ~ on average it takes 6 - 8 weeks to have your finish portraits completed. This can vary depending on the season and the work required. Add additional extra time for any special digital artwork requests.
- ~ the yearbook print if needed can take a couple of weeks to be done so please allow this time for your yearbook deadline.

~ **Don't forget the additional deposit of 50% of the balance is required to process your order.**



**508-822-1557**

398 S. Main St. Raynham, MA 02767

*Studio Hours*

Tues, Wed, 10-6 Thur 12-7 Friday 10-4

**800-540-7468**

141 West Elm St. Pembroke, MA 02359

*Studio Hours*

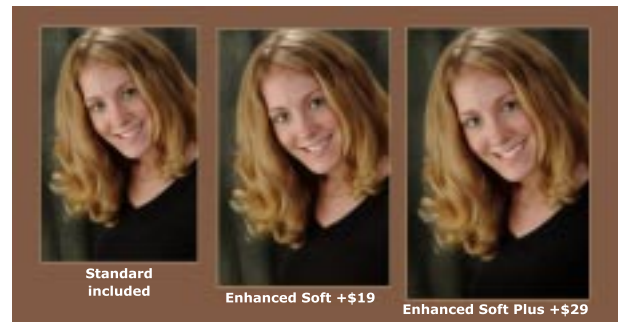
Tuesday 10-6

**How to Order . . .** Each individual pose has a number located underneath it. Use that number for ordering. Mark down on a sheet of paper the sizes and quantity of each pose. **Remember that 5x7's come in pairs, 4x5's come in sets of 4 of one pose, and wallets are in quantities indicated by the package you pick.** Also tell us if you want to include the pose in a portfolio, multi-pose wallet, or one of our Image Galleries, Wall Folios or Senior Mats. Also make a note that tells us which pose is for your yearbook, and if it's B&W or Color. I know this seems a little confusing at first, but it will all make sense later on. If all of this seems overwhelming to you, we'll be happy to figure it out when you return this booklet back to us. Just indicate what you want next to each pose and we will do the rest!



xxxx\_123  
pose #

**Pose Changes . . .** We encourage you to order a number of different poses that will showcase different sides of your personality. However, there is a bit of a cost to do standard retouching and setup for each additional image. Each package will tell you how many poses are included in it free, each additional pose change is **\$19.00** per head in the image for standard retouching. Standard retouching will smooth facial lines and remove slight acne blemishes. More extreme artwork can be done for \$25 - \$59 on average. These are one time fees and cover any sizes you order from that pose. See our additional enhancement choices on the right.



**More Enhancement Choices . . .** We now offer 2 more ways to make your portrait look even better! With our **Enhanced Soft** touch, your portrait is given a special glow, and we'll also enhance your eyes. **Enhanced Soft Plus** takes it a step further and we'll brighten teeth if needed, fix minor stray hairs and add a subtle vignette around the image.  
See samples at our studio

### Money and Stuff . . .

- ~ A \$200 non-refundable payment on your order is required should you like to take the proof booklet and CD out of the studio for home viewing.
- ~ When you place your order, a deposit of one-half of the remaining balance (after any earlier deposits) is due before the portrait order can be processed (this includes the yearbook photo).
- ~ Special layaway plans are available.
- ~ A charge of \$15 will be made for all checks returned.
- ~ **Minimum order is \$200** (excludes session fees)
- ~ Sales tax will be added to all purchases.

### Deliveries . . .

The balance is due in full when the order is picked up within 30 days after notification, and can be made by Cash, Credit Card or Money Order Only. Visa, Mastercard, Amex, and Discover card are welcome.

### Copyright . . .

The photographic works produced by Mark O'Connell are copyrighted. Any reproduction of proofs, wallets or portraits by anyone other than Mark O'Connell is prohibited by federal law and prevented by your integrity. Give only genuine O'Connell portraits to your family and friends.

### Can I Order Later? . . .

Yes, but prices can change. Images from which portraits are ordered will be saved for 2 years. Poses not ordered from will be kept for 6 months. To insure current rates, you should order what you need at one time. You'll save money. Re-orders are based on re-order prices in effect at the time of the order.

### When Do I Return the Proof Booklet? . . .

The proof booklet and CD are loaned to help you decide what poses you wish to order. They are owned exclusively by O'Connell Photography and MUST be returned by appointment within 10 days unless other arrangements are made. Delaying their return could forfeit your order payments and also delay the yearbook pose to the school.

### What About the Yearbook Print? . . .

A yearbook print will be provided upon request. Please let us know if your school requires a B&W or Color Print, and when the deadline is. Please allow 2 weeks before the deadline so that we can have it produced.

### Guarantee . . .

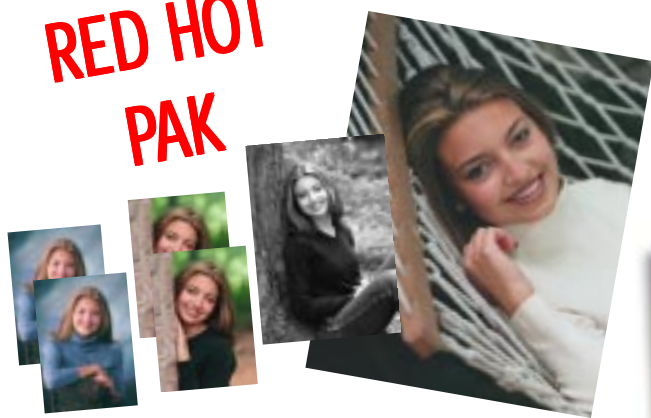
Your satisfaction is the foundation of our success. All Mark O'Connell products are 100% guaranteed.

### Other Information . . .

We are proud of the portraits we create. All Genuine O'Connell Portraits are embossed with our studio name. There will be a 5% charge on the entire order for any photographs requested without our trademark to cover the necessary production changes.

# VALUE PAKS . . . great deals . . . lots of choices

## RED HOT PAK



**\$ 719.**

save \$246.

Package includes:

16x20 wall portrait

1 - 8x10, 4 - 5x7's

92 wallets

(4 sets of 23 wallets each),

yearbook photo,

plus 8 pose folio

Pick up to **4** poses

Take 15% off an Image Gallery with this package!

## Super Special



**\$ 619.**

save \$152.

Package includes:

11x14 wall portrait

1 - 8x10, 4 - 5x7's

69 wallets

(3 sets of 23 wallets each),

yearbook photo,

plus 8 pose folio

Pick up to **3** poses

Take 15% off an Image Gallery with this package!

## STARTER PAK



**\$ 449.**

save \$150.

Package includes:

11x14 wall portrait

2 - 8x10, 4 - 5x7's

46 wallets

(2 sets of 23 wallets each),

yearbook photo

Pick up to **2** poses

## Upgrades . . .

Replace 11x14 with a 16x20 . . . \$86

Replace 16x20 with a 20x24 . . . \$86

Change 8 pose folio to 12 pose folio . . . \$49

Add 8 pose folio to Starter Pak . . . \$135

4 Add additional poses to package . . . \$19 ea.

Signature wallets . . . \$15 per pose

CoolEdge wallets . . . \$ 19 per pose

Canvas Finish on 11x14 . . . \$72

Canvas Finish on 16x20 . . . \$105

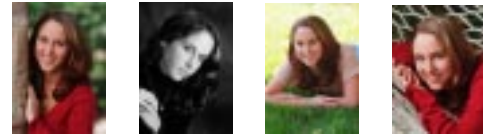
Add a 11x14 frame . . . \$41

Add a 16x20 frame . . . \$57

# EZ-Pak

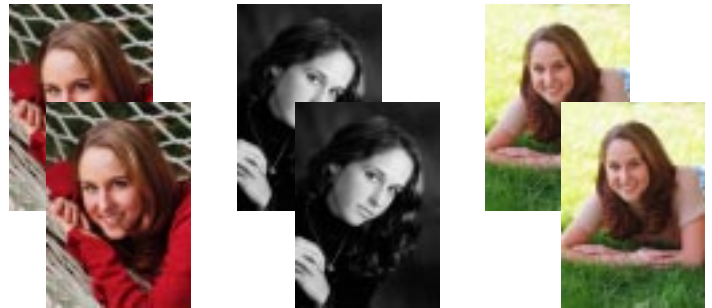
Make it easy...Save money!

60 Wallets (4 sets of 15)



15 wallets of each

6 - 5x7's ( 3-sets of 2)



1. Select up to 4 poses
2. Choose the sizes you want from your 4 poses

1- 11x14, 6 - 5x7's, 60 wallets, up to 4 poses, and yearbook glossy all for **only \$513!** save \$180

## X-tra Bonus!

Get this package and add the set of 8 or 12 proofs (set below) and we'll throw in a bi-fold desktop folio with 2 MORE proofs absolutely **FREE!** (\$69 value)





Add an  
8 pose folio  
\$135  
or  
12 pose folio  
\$183  
and get the **X-tra Bonus** Above

Add a folio to the EZ-Pak and take **15% off an Image Gallery!**



1 - 11x14



And **YES**, I would like a frame to go with that! I understand that for the incredibly low price of **only \$41**, my 11x14 portrait will be professionally framed in my choice of a **Gold, Silver, Oak or Walnut, or Black** (from our special selection) frame when ordered along with the print. See our large selection at the studio.

**Wait...** I want to upgrade my 11x14 to **16x20**, for **only \$76** (total savings of \$250)  
Add 16x20 frame for only \$57

**Here's what we recommend:**

E-Z Pak .....	\$ 513
get a proof set of your favorite 8 with a folio for them .....	<b>\$ 135</b>
Bonus of 2 more proofs and a folio <b>FREE !</b>	
And add on the frame too .....	\$ 41



508-822-1557 or 800-540-7468

# Special Values . . . quality combinations

## A

up to two poses  
 1 - 20x24  
 4 - 5x7's (one pose)  
 47 wallets (from one pose)  
**\$ 523** (\$623 canvas\*)

## B

up to two poses  
 1 - 16x20  
 2 - 5x7's (one pose)  
 47 wallets (from one pose)  
**\$ 437** (\$542 canvas\*)  
 (\* largest print is on canvas)

## C

up to two poses  
 1 - 11x14  
 2 - 5x7's (one pose)  
 47 wallets (from one pose)  
**\$ 329** (\$399 canvas\*)

## D

up to two poses  
 1 - 11x14  
 2 - 5x7's (one pose)  
 15 wallets (from one pose)  
**\$ 285** (\$357 canvas\*)

## E

up to two poses  
 2 - 8x10's  
 2 - 5x7's (one pose)  
 31 wallets (one pose)  
**\$ 325**

## F

one pose only  
 1 - 8x10  
 2 - 5x7's (one pose)  
 23 wallets (from one pose)  
**\$ 229**



### Extra Desktop, Gift & Album Sizes . . .

**Add to Value Paks, EZ Pak or Special Values only**, from same pose. For a pose not previously ordered from, simply add \$19.00 for pose change. SENIOR finish.

**8x10** 47.00    **5x7 set of 2** (same pose) 50.00    **4x5 set of 4** (same pose) 63.00  
**11x14** 111.00    **16x20** 218.00    **20x24** 334.00

### Wallets . . .

**Add to Value Paks, EZ Pak or Special Values only**, from same pose. For a pose not previously ordered from, add \$19.00 for pose change. Be sure to order enough to give to your classmates, friends, and relatives.

15 wallets in one pose	<b>49.00</b>	31 wallets in one pose	<b>65.00</b>
47 wallets in one pose	<b>79.00</b>	100 wallets in one pose	<b>117.00</b>
94 wallets in two poses of 47	<b>146.00</b>	188 wallets in four poses of 47	<b>217.00</b>

**Yearbook Glossies** – are included on all special value packages at no additional charge.

**Portfolios** – add a 8 pose portfolio to any package over \$275 for only \$163.00. Orders over \$375, it's only \$135  
 add a 12 pose portfolio to any package over \$275 for only \$ 215.00 Orders over \$375, it's only \$183

**Want more poses** ñ to add more poses to your Value Pak, EZ Pak or Special Value Pak simply add \$19.00 for each pose change.

### A-La-Carte Choices ~ For those who do not desire a package.

SIZE	SENIOR Addtl*	CANVAS Addtl*	SIZE	SENIOR Addtl*	CANVAS	Addtl*
30x40	599.00	899.00	24x30	478.00	698.00	
20x24	350.00	450.00	16x20	281.00	359.00	
11x14	139.00	233.00	8x10	83.00	59.00	138.00 98.00

5x7 set of two (same pose), Senior finish 87.00, Addtl 64.00  
 4x5, set of four, (same pose), Senior finish 99.00 Addtl 74.00  
 \* Addtl. are of the same pose.

**WALLETS** – from one pose  
 15 75.00    31 95.00    47 116.00    100 146.00  
 If ordered with a larger print of the same pose, deduct \$16.

#### YEARBOOK GLOSSIES

Set of Two (same pose) 49.00    If ordered with a larger print of the same pose, deduct \$16.

**Image Galleries** - this product has been met with rave reviews! You can pick **3 images** which we'll *combine in 1 -8x16" photograph*. Then we'll *enhance them with artwork, decorative edges, and optionally, your name and the date the photograph was created*. The print will then be mounted, framed and **ready to hang!** What a great way to add a custom look to any small space in your home! Perfect as gifts too! **Super Size** this gallery to 10x20" for only \$49. more.

**Deluxe Image Gallery**



Our **Deluxe 8x16' Image Gallery** features 3 images in black&white or color, with special edge effects added, placed on a custom background. An additional image can be faded into the background. Special touches are also added to enhance the final product. Each one is custom designed. Custom Name and date can be added as more personalization.

**Pricing** . . . Image galleries are available at special savings depending on your total order amount before adding on the gallery.

Order amount*	\$275-575	\$576-800	\$801 & up
<b>Framed (Black)</b>	\$254.00	\$227.00	\$209.75
<b>Unframed</b>	\$202.00	\$175.00	\$157.75

\*before gallery is added

**Contemporary Image Galleries**

these 8x16" black and white galleries, designed by Mark O'Connell, give a contemporary flair to your portraits. Pick your favorite 2-4 images. Priced the same as our Deluxe Image Galleries



blanca



ebony



scrol

Our **New for 2005 8x16" Impressions and Athlete Galleries** are custom created. Your images are blended together to form a unique and dramatic image panel. No two are exactly alike. \*Available for only \$49 more than our regular above galleries.



Impressions Gallery



Athlete Deluxe Gallery

only **\$49** more\*

**SUPER SIZE** any 8x16" gallery to 10x20"

only **\$49** more



# New for class of 2005



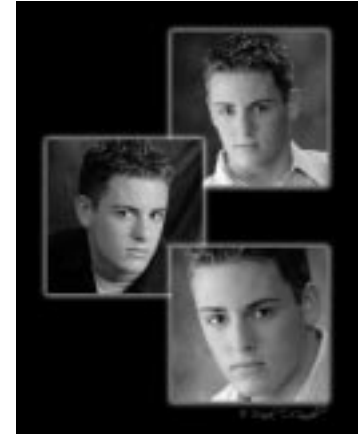
Elegance 11x14  
unframed \$199

These multi-pose panels are ideal for contemporary homes. They capture an entire personality in one image in a way that traditional portraits often cannot.

**Pricing . . .** Any of these panels are available with a minimum order of \$275.



Expressions 16x20  
unframed \$299

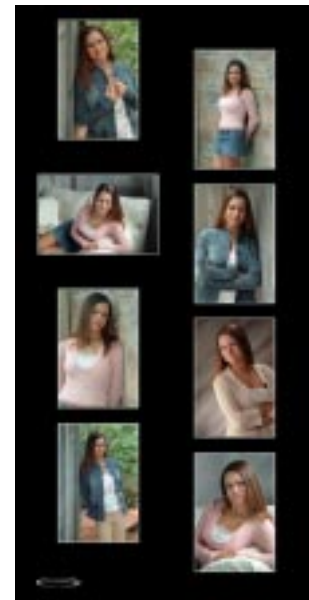


Impact 11x14  
unframed \$179

## Folio Alternatives



Framed  
5x30"  
"Skinny"  
Wall Folio.\*  
\$249.  
Duplicate  
\$199



10x20  
Wall Folio\*  
\$249.  
Duplicate  
\$199



Acrylic Framed 4x10" Desk Panel  
\$69. Duplicate \$40

\* Add lite retouching for \$49

**SeniorMats** - are digitally created custom mats. Your mat is created by Mark on his computer to perfectly match your portrait, each one is unique. The mat colors are co-ordinated to match the colors in your photo, or even to match the colors in the room where your portrait will hang. The mats come in a variety of openings and can be textured and personalized with your name or other words for the coolest look in senior photography today!



16x20 Dimension



16x20 Overlay

20x20 Circlemat . . \$325 with mat.



Add a Mat to any portrait  
11x14" or larger for only  
**\$39**

## Museum Gallery Mats

A more contemporary mat design featuring a wide white or black border surrounding the portrait.



## Speciality Multi-Pose Mat Designs

Multiple openings and specialty sizes allow you to have many poses in a virtual mat, color matched to the images, yet can be framed without glass.  
Pre-priced with the number of images shown.



16x24 w/1-8x10 & 4-4x5s . . \$ 410



10x20 w/3-5x7s ... \$299



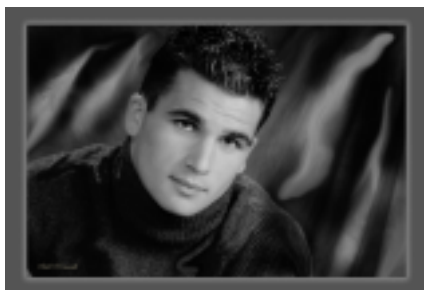
10x20  
\$229 with mat

# Unique Giclee Panels . . . \$ 269. framed

This select premium 8 by 18 inch panel of your portrait images is printed on rich art paper with archival inks. This technique creates a unique look not found with traditional processes. Each collection comes framed, ready for hanging. See samples at our studio.



# Fantasia Portraits . . . \$ 349. framed



## What is a 'Fantasia' ?

It's an artistic rendition of reality. Your portrait will lose all restraints of what is called ... normal ... and delve into Mark's imagination. The portrait will become a one of a kind piece of ART.

All 'Fantasias' come as they are ... they are Mark's 'artist interpretation', no changes will be made.

Fantas are approx. 13 by 19 inches and are printed on rich art paper with archival inks. Each Fanta comes framed, ready for hanging.

\$ 349.

See samples at our studio.

# Wallet Options

## Signature Wallets . . .

At O'Connell's you can have your wallets personalized with your name handwritten by you, or set in type by us. See the samples to select the style you like best.



Your Choice... \$ 15

per pose\* \* plus cost of wallets

Font Choices  
*Brush Script MT*

Tempus Sands

Collegiate

Commercial Script

**Classic**

Scriptina

Tahoma

Times New Roman

**Pepsi**

## Cool Edge Wallets . . .

Four Very Cool edges to make your portrait stand out from the rest.

Your Choice... \$ 19

per pose\* \* plus cost of wallets



#1



#2



#3



#4

## Limited Edition

### Wallets . . .

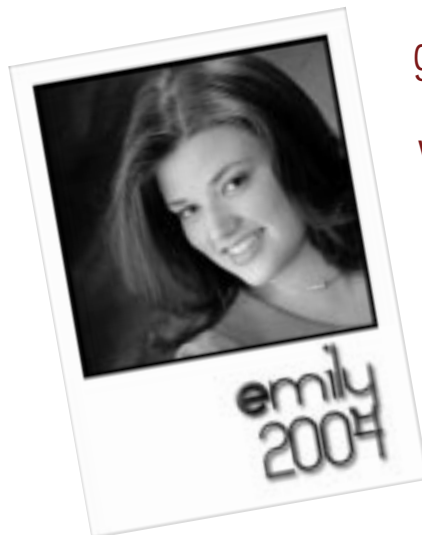
Provoke a contemporary look to your portrait wallets. Available only in stylish black and white.

Your Choice...

\$ 25

per pose\*

\* plus cost of wallets



gallery  
look  
white

gallery  
look  
black



**SeniorCD . . .** Have all your images to keep on CD. Complete with background music and personalized with a cover photo and name. Pop it into your PC computer and watch. It's available with a portrait order of at least \$350\*. As your portrait order increases, your cost for the CD decreases as follows.



\* Order amount before adding this item.

Order Amount	CD for only
\$350-450	\$99
\$451-525	\$59
\$526-624	\$39
\$625+	<b>FREE</b>



**2005 Senior "Hot" Album . . .** Better than a Folio. Now you can have up to 42 of your poses\* to keep in one great looking collection. Comes complete with the album. \*Poses are un-retouched. Add \$99 for lite retouching of all poses.

**\$259 with a portrait order over \$379.**  
**Special... \$189 with any portrait order over \$499**



**Old Fashioned Proof Folios . . .** Proof folios from the days of yesteryear are still available. These are the deluxe style folios we've offered forever that **hold 8 or 12 4x5 inch un-retouched proofs**. You pick your favorite 8 or 12 poses and we'll mount them in the folio for you. They're available with a portrait order of at least \$275.\* As your portrait order increases, your cost for the folio *decreases* as follows.



Order Amount	8 Proofs/Addtl Set**	12 Proofs/Addtl Set**
	Mounted in Folio	Mounted in Folio
\$275-375	\$167/\$125	\$215/\$163
\$376-600	\$130/\$99	\$183/\$137
\$601-800	\$114/\$83	\$163/\$110
\$801 and up	\$99/\$63	\$137/\$89

\* Order amount before adding this item.

\*\* Additional sets must be of the same 8 or 12 poses.

Add lite retouching of all 8 poses for only \$49, or all 12 poses for \$74. No charge for addtl sets!

## Want B&W, Browntone or a Tint? . . .

Yeah, we can do that too! Any of your images can be made into black and white, browntone, a tint of blue, or any tone you want. There is no charge to convert to B&W. Single Tone color tint (Sepia, Blue, etc.) is \$15. Spot tones are \$36 as that does take a bit more work.



## Special Services . . . Glass Reflections . . . \$ 59 per pose - our digital artists can remove glass glares caused by certain prescription lenses.

**Braces removed . . . \$ 59\*\* per pose** - Our digital artist removes the braces and identical tooth material above and below the braces area is cloned to fill the gap. The result is a perfect match. Hundreds of perfect copies can be made quickly and easily.  
\*\* upper and lower braces \$79.

**Hair Corrections . . Avg \$25-\$59** - our digital artist will blend or remove mis-placed hair and blend with the background.



**Wallet Albums . . .** These deluxe albums hold plenty of your friends' portraits. They prevent fingerprints and bent corners. And when you show them around, others won't be able to read whats on the back. Order one for every 20-50 wallets you get of yourself.



Album that holds:  
20 wallets . . . \$19  
50 wallets . . . \$24



## Framing . . . One Stop Shopping.

Many Styles  
One Low Price



**A word about Framing Photography:** Selecting the proper frame for a portrait can greatly enhance the look of the image. You should also consider the room where the image will hang. Co-ordinate the color of the frame with the colors or woodwork of the room.

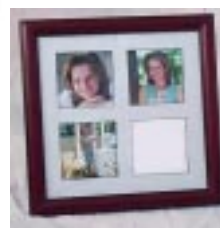
The frames we offer are good quality and affordable. Any wall portrait frame ordered along with the portrait order will be professionally mounted in the frame at NO CHARGE.

**Glass** - Never display photographs in direct sunlight. If you desire glass over your prints please add the appropriate charge and check glass. Glass is not necessary, unless there are smokers in the house.

Size	Clear Glass	Non Glare
11x14	\$14.00	\$19.00
8x16	\$18.00	\$24.00
10x20	\$19.00	\$31.00
16x20	\$20.00	\$31.00
20x24	\$31.00	\$59.00

### FRAME PRICES

11x14 . . . \$41.00  
16x20 . . . \$57.00  
20x24 . . . \$74.00  
**Image Galleries**  
8x16 . . . \$41.00  
10x20 . . . \$51.00



**Senior Desk Frame . . .** Just right to display on a desk or table. Available in wine or gold. \$ 55. (with 4 prints included . . . \$ 110.)

**Senior Wall Frame . . .** These arrangements offer lasting memories of graduation. Double matted and holds 4 of your favorite photos. Available in wine or gold. \$ 109. (with 4 prints included . . . \$163.)





398 S. Main St.  
Raynham, MA 02767  
508-822-1557

Order Tally/Invoice

Account No.

Name			Viewing Date/Time	T	W	Th	F	/	:	am	pm	
Address			Pose #'s	School								
City			State	Zip	Session Date			Session Fee \$	Cash	CreditCard	Ck#	
Home Tel			Business Tel		Order Date			Date Needed				
Name of Subject			Age	Type	Order Completed			Notified				
Originals Out			Originals Returned									

	Package Name			Wall Size	Yearbook Pose #	Price	Total Price
	Pose#	Qnt.	Size	Description	Finish		
<b>Portraits</b>							
<b>Extra Pose Changes</b>	Qnt. _____ Pose # _____, _____, _____, _____, _____, _____, _____ @						
<b>Previews &amp; Folios</b>	I would like _____ sets of <b>8</b> or <b>12</b> old fashioned proofs. @						
	I would like _____ proof folios of <b>8</b> or <b>12</b> for the proofs. @						
	I would like my proofs retouched too! yes or no? (circle) @						
<b>Image Galleries SeniorMats</b>	Pose # _____						
	I would like to keep the Image Collection CD that I borrowed. yes no @						
	My order is over \$250 and I would like to keep this proof booklet @ <b>\$25.</b>						
<b>Image Galleries SeniorMats</b>	I would like _____ Image Gallery or Deluxe Image Gallery (circle) @ (fill out worksheet please)						
	I would like _____ SeniorMat(s) Style # _____ @ (fill out worksheet side please)						
<b>Digital Elements</b>	Digital elements are things like multiple poses put together in the same image, adding text (name, etc.,) color spot, and edges. Total # elements _____ @						
<b>Signature Wallets</b>	<input type="checkbox"/> Typeset Pose #'s _____		<input type="checkbox"/> Signature Imprint _____		<b>CoolEdge Wallets</b>	Edge # _____ Pose #'s _____	
	Qnt. _____		Size _____		Description _____		
<b>Frames</b>							
<b>Bonuses</b>							

I commission O'Connell Photography to create the portraits ordered by me on the poses indicated and I agree to pay the balance for such services within 30 days after the order is completed. I also agree that for any reason I fail to pay the balance due within 90 days after the order is completed, O'Connell Photography will either, at their discretion, dispose of the unclaimed order will all deposits forfeited or I will pay any fees occurred by O'Connell Photography for legal collection of the above. I further agree that you, as a member of O'Connell Photography, may use any or all poses taken on this session for display, advertising, website, competition, and promotional purposes.  
**TERMS: One-half of the remaining balance is required when the order is placed.** No part of the order can be delivered until the total balance is paid. A monthly storage charge of 1 1/2% of the balance is added on balances after 30 days.

SIGNATURE \_\_\_\_\_ DATE \_\_\_\_\_  
PARENT OR GUARDIAN (IF UNDER 18) \_\_\_\_\_ DATE \_\_\_\_\_

Subtotal	
Sales Tax	
Post/Hand.	
Total	
Deposit	
Balance	
Deposit	
Bal. On Del.	